

Tea and Tales

This term **Nuccia McLean** will be sharing her adventures with us in August.



Nuccia has many interesting tales to tell us about her time in India when she went for a holiday there with family.

Date: **10am, Wednesday 25th August**

Venue: Resource Centre

Cost: Gold coin donation

“Tea and Tales” is a social morning and a chance to get together, have a cuppa, morning tea and hear an interesting tale or two from someone in the community or wider district!



Neighbourhood Houses
The heart of our community - Bookings appreciated!

DO YOU NEED ANY LICENCES?



Forklift, Front End Loader, Backhoe, Skid Steer Loader, Excavator, Grader, Roller, Dozer, Telescopic Materials Handler, Chainsaw, Bus, Truck, (including

Multi Combination/
B-Double) etc.

Please let us know and we can organize assessments to be done in Wycheproof.



INVESTING FOR WOMEN

A special financial information session for women has been organized in Swan Hill with well known stockbroker and financial planner Carol Corbey. The session will cover:

- Financial Plans - A tool for mapping progress
- Superannuation - What's it really worth?
- Demystifying the Share Market
- Succession Planning

When: 21st July, 10.30-2.30 (Inc Lunch)

Where: 'The Grain Shed', 2-8 King Street
Swan Hill

Cost: \$15

Bookings Essential!! Ph: (03) 8644 5401 or
Email: carolcorbey@rbsmorgans.com

~ ONGOING CENTRE SERVICES & ACTIVITIES ~

The **Resource Centre** offers a range of activities and services to the community including Centrelink Access Point, ATO Information, Secretarial Services, Public Internet Access, Fax & Laminating services, Colour and Black and White Photocopying, Scanning & emailing articles, Book Exchange and Meeting Room/Office & Equipment hire.

Thursday Group sessions are every Thursday from 9.30am to 12.30pm with Internet access @ \$3 per session plus printing costs. Make sure you come along as Lynda Rumbold will be available to help you with your computer and internet queries and ensure an enjoyable morning.

The **Sunday Patchworkers** meet the 3rd Sunday of every month.

The **Men's Shed** is open every Tuesday and Thursday afternoons from 1pm to 5pm.

The **Information, Art & Craft Shop** are open most week days and welcome new local members.

The **Op Shop** have now relocated to the front of the Men's Shed and is open every Tuesday and Friday from 10am to 4pm.

Don't forget - Testing and Tagging electrical appliances can be done at the Resource Centre for a small price.

For more information on any of the above mentioned please contact the staff at WCRC.

NEXT TERM CLASSES:

- Boat & Jet Ski Licence
- Responsible Serving of Alcohol
- Make your own Christmas Decorations
- And lots more

For all our classes the fees are calculated at a break-even rate. When last minute cancellations (within 48 hrs) or non-attendance to a course occurs, the Resource Centre has to incur the costs of Tutors and materials etc. Therefore if you have registered in a course and cancel within 48hrs or simply don't attend the course, then it will still be necessary for the full course fee to be paid.



WHAT'S ON

Term 3 - July to September 2010

280 Broadway (PO Box 78) Wycheproof 3527

Ph: 03 5493 7455

Fax: 03 5493 7171

Email: mwrcr@bigpond.net.au

Opening Hours: Monday to Friday 9.00am to 5.30pm

Get Your Local Phone Book at the Resource Centre - only \$7 each!!

~ CALENDAR OF EVENTS ~

JULY

Sunday 18th

- Bus Trip to Calendar Girls in Melbourne, leaving Wycheproof at 9am

Monday 19th

- Step Box & Gentle Circuit Training classes start at Community Sporting Complex

Wednesday 21st

- Investing for Women (in Swan Hill)

Tuesday 27th

- Food Handlers Course

Thursday 29th

- Computer Course starts

AUGUST

Wednesday 4th

- Indian Cooking

Tuesday 10th

- Coffee Making Course

Mid August

- Introduction to Golf

Monday 23rd & Tuesday 24th

- Achieving Farm Business Success

Wednesday 25th

- Tea & Tales with Nuccia McLean

SEPTEMBER

Wednesday 1st

- Soft Material Doll Making

Tuesday 14th

- Flower Arranging

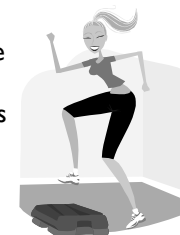


Neighbourhood Houses
The heart of our community

~ GILL'S EXERCISE CLASSES ~

STEPBOX

Burn calories, build endurance and increase your fitness with StepBox. Workouts can be as challenging as you want them to be as it can all be taken at your own pace and modified to suit the individual.



Dates: **Mondays starting 19th July** to 6th Sept for 8 weeks

Time: 5.45pm - 6.45pm

Cost: \$60

Venue: Wycheproof Sporting Complex

Tutor: Gill Fawcett

GENTLE CIRCUIT TRAINING

Consisting of cardiovascular and toning exercises for those who want to get fit and healthy at a slower pace.



Dates: **Mondays starting 19th July** to 6th Sept for 8 weeks

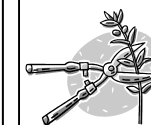
Time: 7pm - 8pm

Cost: \$60

Venue: Wycheproof Sporting Complex

Tutor: Gill Fawcett

DO YOUR ROSES, FRUIT TREES NEED PRUNING, BUT YOU'RE NOT SURE HOW TO GO ABOUT IT?



Please register your interest and we can organize a class as soon as possible!!

Specialising in high quality Photocopying, Resumes, Service Booklets, Laminating and much more!!

Wycheproof Community Resource Centre - Celebrating 22 years of service to the Wycheproof Community

MICROSOFT PUBLISHER, PHOTODRAW, WORD AND INTERNET/EMAIL



Are you currently able to complete basic tasks on the computer but wish to enhance your skills and develop your knowledge?? This class will focus on the programs Microsoft Word, Publisher and Photodraw and help you get the most out of the Internet and Emails.

Publisher is a great program to develop posters and banners, PhotoDraw is fantastic for editing and enhancing your favourite photos and Microsoft Word can be used for much more than just writing letters!! Come along and let Lynda show you just what you can do with these great programs!!

Date: **Thursday 29 July to 26 August (5 wks)**

Time: 1pm to 4pm
Venue: Resource Centre
Tutor: Lynda Rumbold
Cost: \$55




(Enrol today to ensure your place!!!)

COFFEE MAKING COURSE

Learn the skills to making coffee the correct way and expand your opportunities for employment or increase your business trade dramatically!

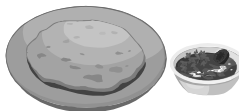
Tracey King runs the Bendigo Coffee School and offers a three hour introductory course which covers all aspects of set up, grinding, tamping, extraction, milk texturing, cleaning equipment and basic coffee menu. Class sizes are small, around 4 – 5 people.

 So whether you want to make your business stand out in the crowd, or you're trying to better your chances for employment or whether you just want to impress your family or friends when they call for a cuppa - then this course is for you!

Date: **Tuesday 10th August**
Time: 2 classes: either 10am to 1pm or 2pm to 5pm
Venue: WNFC - Ladies Kiosk
Tutor: Tracy King
Cost: \$100

INDIAN COOKING

Do you love Indian food and have you always wanted to learn how to make... or at least taste the perfect curry? Then this class is for you! Come along and watch Subhash Gupta prepare a traditional Chicken Curry and a Vegetarian Curry and then enjoy the finished product!

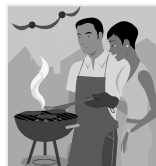


Date: **Wednesday 4th August**
Time: 6pm - 9pm
Venue: TBC
Tutor: Subhash Gupta
Cost: TBC (depending on numbers)

Subhash is opening his own business in Wycheproof in a few weeks time - "CURRY DELIGHT" "Door Delivered Indian Dinners"

FOOD SAFETY HANDLING COURSE

If your community group or sporting club conducts events which involve food such as barbecues and cake stalls then you need training in safe food handling.



This accredited training also provides quality hygiene training to food industry staff as well as the community.

VOLUNTEER FUNDING - Thanks to volunteer funding from the Department of Planning and Community Development we are able to offer a \$50 subsidy for representatives of volunteer organizations in Wycheproof, Charlton and Nullawil. Authorisation in writing is required by the club/organization you are representing and there are limited volunteer places available so get your name in fast.

For more information contact the staff at the Resource Centre.

Date: **Tuesday 27th July**
Time: 9.30am - 1pm
Venue: Resource Centre
Tutor: E-Works
Cost: \$115

BOOKINGS REQUIRED FOR ALL CLASSES!

INTRODUCTION TO GOLF

Have you always wanted to have a go at golf but not sure how to go about it without being under pressure to 'know what you're doing' - then this is the session for you. It will be a very relaxing 5 holes with tuition available from some of those 'in the know', who will be there to offer you support and some hints on how best to go about the game of golf. If you have little ones there will be someone available to watch them in the clubhouse while you learn out on the course for the 1½ - 2 hours max. No Golf Sticks ?? Don't worry as there are some sets at the Club for use if needed.



Interested !! Register with the Resource Centre by July 30 and a date and time to suit those interested will be arranged.

Venue: Wycheproof Golf Club
Wear: Comfy clothes / Rubber soled shoes
Cost: \$5 per person

SOFT MATERIAL DOLL MAKING

This hands on class with Bev Coles will teach you how to make the brightly coloured soft dolls Pip or Emma! The dolls will be a favourite with the grandkids and are perfect to enter into the soft cuddly toy section of the Wyche Show. To have a look at a picture of Pip and Emma call into the resource centre or contact us and we can email you a copy.



Date: Wednesday 1st September
Time: 1pm - 4pm
Venue: Resource Centre
Tutor: Bev Coles
Cost: \$5 plus materials
Materials: List available at resource centre

FLOWER ARRANGING

Do you want to learn the art of arranging flowers in an attractive and effective way? With the A&P Show approaching you might even want to enter in the Flower Arranging section or impress your family with beautiful arrangements throughout the house.

Date: Tuesday 14th Sept
Time: 1pm - 4pm
Venue: Resource Centre
Tutor: Elaine Ison-Ritchie
Cost: Gold coin donation
BYO: (if you can) Flowers/Greenery & vase



"ACHIEVING FARM BUSINESS SUCCESS IN A RISKY WORLD"

(A 2 day course being offered statewide as part of the VFF Climate Change Project)

There are lots of risks involved with farming, such as: climatic uncertainty and season variability; commodity price and interest rate fluctuations; on top of other risks like fires, disease, personal injury and illness. When faced with these risks, planning is essential to:



- Plan how to generate the income you need now, as well as the retirement income you need for the future.
- Have a "Plan B" to get you through when risky events occur.
- Have a farm plan that meets the needs of both generations, despite the risks of farming, when two generations are involved.
- Provide a plan to lenders on how loans will be serviced, despite risks faced.

This course will help you manage the identified risks and achieve success in your farm business. Course Cost:

- The course cost is \$1390 but FarmReady approved participants (farmers and immediate families) may have course fees **fully reimbursed** by FarmReady

The course includes:

- 2 day course with lunch and refreshments
- A copy of 'Farm Business Planner V5' software, and the 300 page book 'Financing Your Farm' and folder of course notes.

When: **23rd & 24th August**
Venue: Resource Centre
Tutor: Alan Blackburn & Associates Consulting

For more information contact the Resource Centre.
BOOKINGS ESSENTIAL!